



**J.PSARRAS S+P ,CHART-PIRAEUS (since 1981)**

Ph:+30 210 4123696 4133931 4115482

Fx:+30 210 4170618

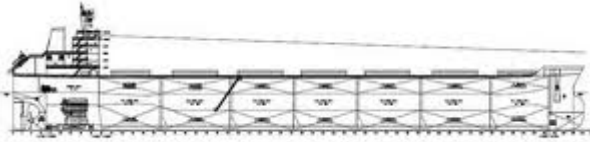
E'Mail: [psarras@psarrasj.gr](mailto:psarras@psarrasj.gr) Website: [www.psarrasj.gr](http://www.psarrasj.gr)  
(Members of Hellenic Shipbrokers Association - 1984)

## **BI-MONTH REPORT**

**MID SEPTEMBER 2015**

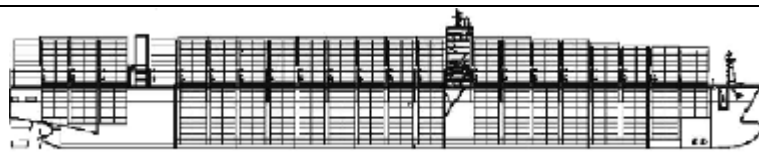
**The scope of this report is to assist our clients and friends with a quick glance every about 15 days to get a feeling of the market by reading the more interesting sales in view of higher or lower prices of the main vessels types as well as the demolition prevailing prices.**





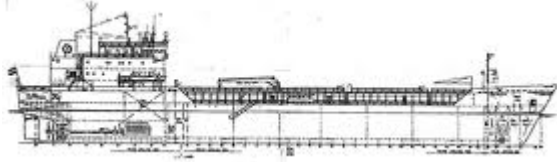
## BULK CARRIERS

NAME	DWT	Y.O.B	P.O.B	PRICE
NEW AGILITY	76623	2001	JAPAN	6,8 MIL USD TO S.KOREANS
FU MAY	76015	2002	JAPAN	8 MIL USD TO UNDISCLOSED
DAEBO TRADER	73870	2002	JAPAN	7,4 MIL USD TO GREEKS
SIMON SCHULTE	46489	1996	JAPAN	3,9 MIL USD TO UNDISCLOSED
VEGA VENUS	31753	2011	CHINA	3,8 MIL USD TO CHINESE
ORIENTE CREST	29738	2003	JAPAN	6,9 MIL USD TO FAR EASTERN
VAN ORCHID	28341	2009	JAPAN	9,8 MIL USD TO UNDISCLOSED
SIR ALBERT	15962	1997	CHINA	2,3 MIL USD TO EGYPTIANS



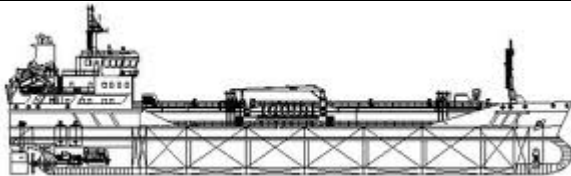
## CONTAINER SHIPS

NAME	DWT	TEU	Y.O.B.	P.O.B	PRICE
LINTON	51427	4400	2012	S.KOREA	25 MIL USD TO UNDISCLOSED
CORAL BAY CRYSTAL BAY	34400	2490	2005	GERMANY	EN BLOC 30 MIL USD TO UNDISCLOSED
CAPE FALSTER CAPE FRASER	16400	1200	2005	GERMANY	EN BLOC 15 MIL USD TO GREEKS
ASIAN GYRO	18055	1032	2001	JAPAN	6 MIL USD TO FAR EASTERN



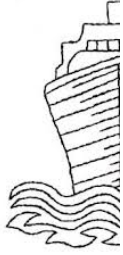
## GENERAL CARGO

NAME	DWT	Y.O.B	P.O.B	PRICE
KU AM	7120	1994	JAPAN	1,5 MIL USD TO FAR EASTERN
JOCHING	4247	2002	BULGARIA	2,1 MIL USD TO GERMANS
OCEAN LEAP	10000	1997	JAPAN	1,6 MIL USD TO INDONESIANS



## TANKERS

NAME	DWT	HULL	Y.O.B	P.O.B.	PRICE
ELIZABETH M ROSEY R ABBY	319869 318700 319869	DH	2010 2011 2010	S.KOREA	EN BLOC 195 MIL USD TO GREEKS
VARADA LALIMA	107176	DH	1997	JAPAN	8,5 MIL USD TO UAE BASED
ASTRO ANTARES	98875	DH	1996	S.KOREA	12.2 MIL USD TO UAE BASED
MAERSK MALTA	50308	DH	2010	CHINA	27 MIL USD TO DANISH
NORD OPTIMISER	47407	DH	2007	JAPAN	21 MIL USD TO HONG KONG BASED
STYLE STAR I STONE I STEEL SKY SILENT SINGLE	37900	DH	2007-2008	S.KOREA	EN BLOC 155 MIL USD TO DANISH
MAERSK ELIZABETH	37021	DH	2001	CROATIA	13 MIL USD TO NIGERIANS
CHEMICAL LIBRA	18041	DH	2012	CHINA	12 MIL USD TO UNDISCLOSED VIA AUCTION



# DEMOLITION



## BANGLADESH

NAME	LDT	DWT	Y.O.B	P.O.B.	PRICE
RALDA	8146	31453	1981	S.KOREA	350 USD PER LDT
ROYAL OCEAN 8	10691	70677	1995	BRAZIL	300 USD PER LDT
HANJIN HAYPOINT	19499	151023	1990	S.KOREA	335 USD PER LDT



## INDIA

NAME	LDT	DWT	Y.O.B	P.O.B.	PRICE
WEI FONG	12609	70045`	1990	CHINA	332 USD PER LDT
MASUREN	11281	36120	1997	CHINA	340 USD PER LDT
REIS G	8278	41937	1986	JAPAN	330 USD PER LDT
ARAHURA	6977	2457	1983	DENMARK	REGION 230 USD PER LDT AS IS NEW ZEALAND

### **Disclaimer**

All information stated in this report has been collected from a variety of maritime sources and is presented in good faith and without any guarantee from our part .

J. PSARRAS S+P CHARTERING, shall not accept any responsibility for any errors and/or omissions arising from this report and cannot be held responsible for any action taken and/or losses occurred as a result of the details included in this report.

Recirculation of same is not permitted without the written agreement of the aforementioned company, which is the only entitled one to produce copies of same.